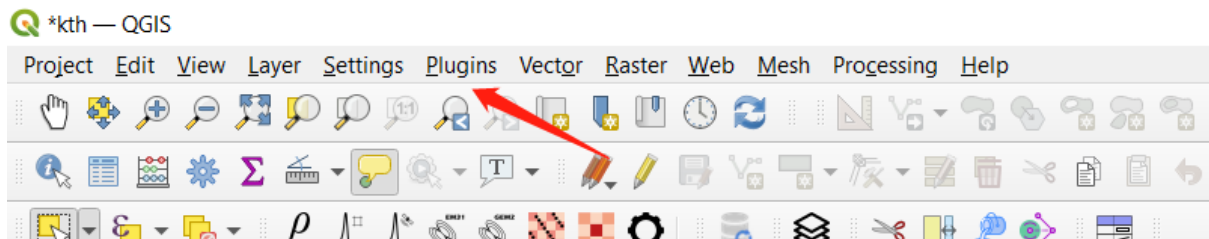


## Install steps:

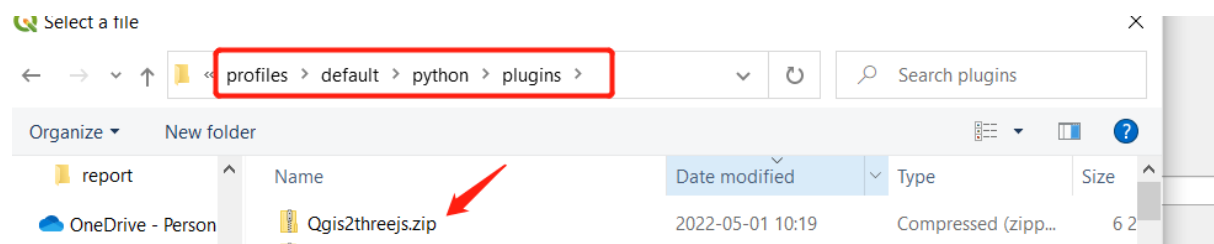
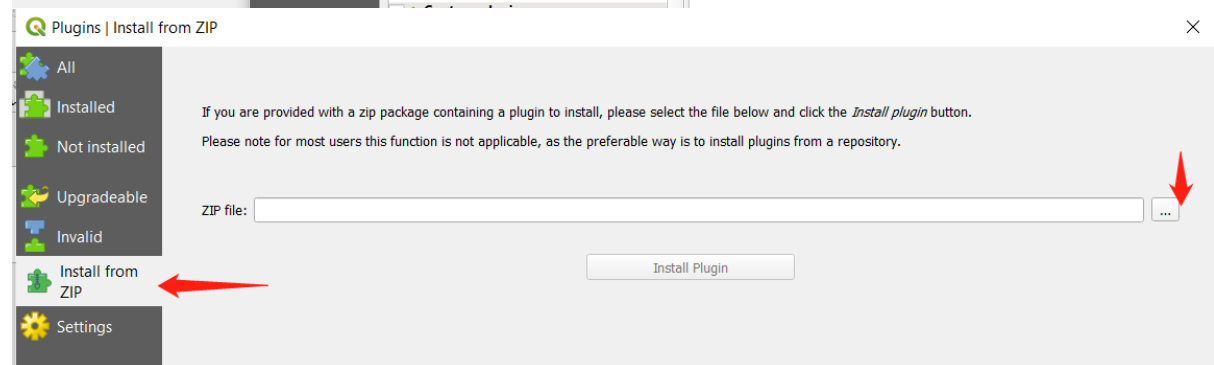
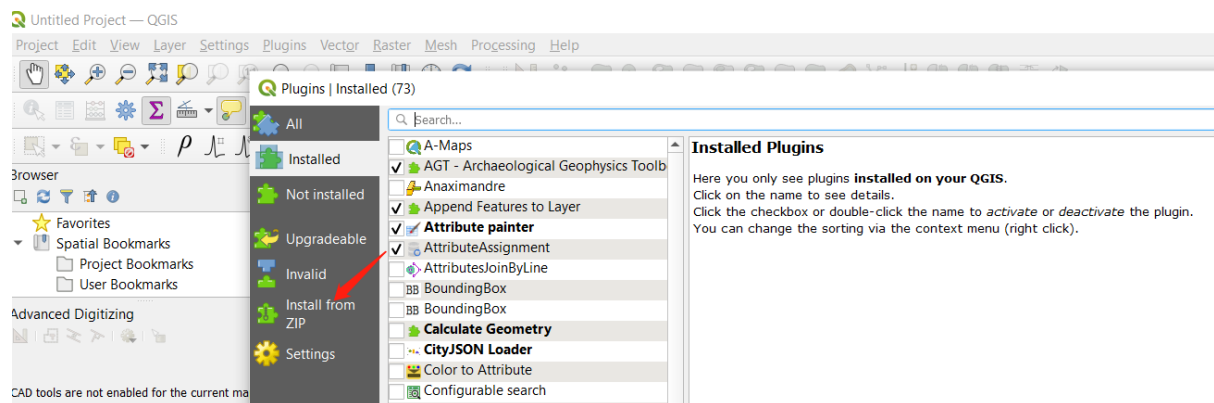
1. First, Find your QGIS path, and put the install .zip file in the plugins folder.

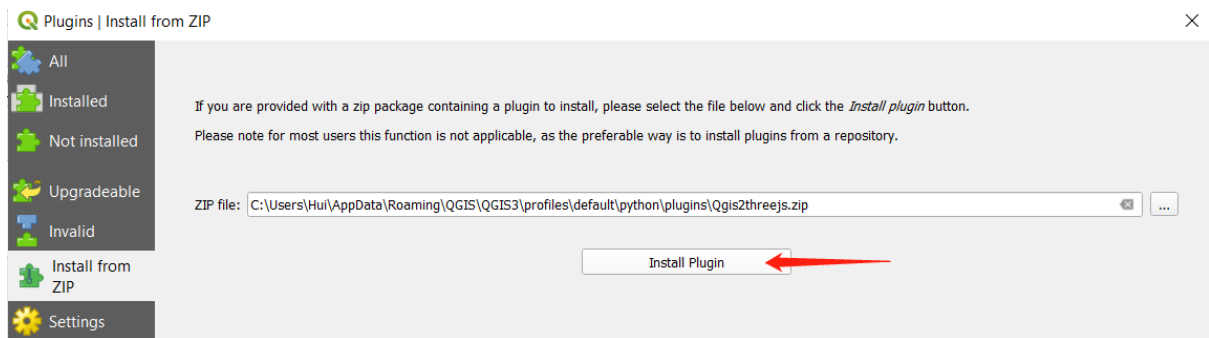
( My qgis path is C:\Users\Hui\AppData\Roaming\QGIS\QGIS3\profiles\default\python\plugins )

2. Select the Plugins button, and select Manage and install plugin

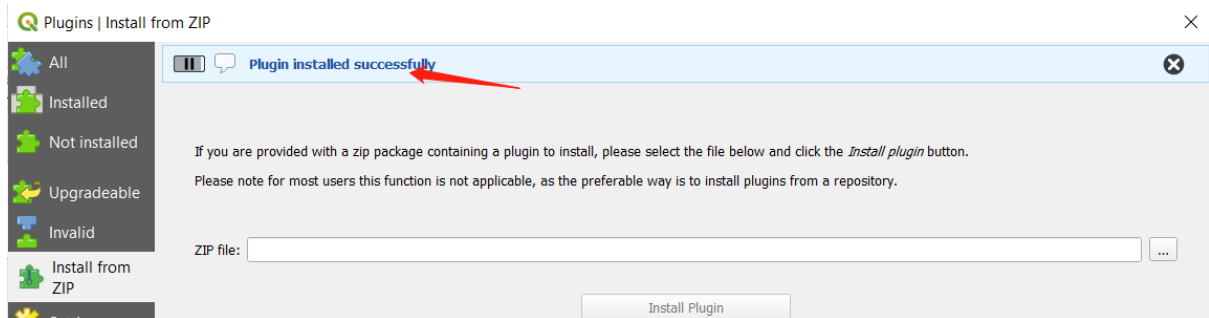


3. Press Install from Zip and chose the path of install .zip file, and press install



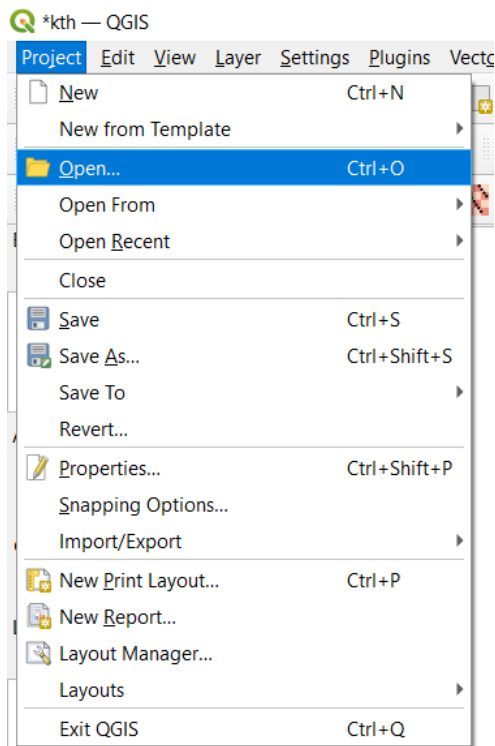


When it shows plugin installed successfully, we could start to use the tool.



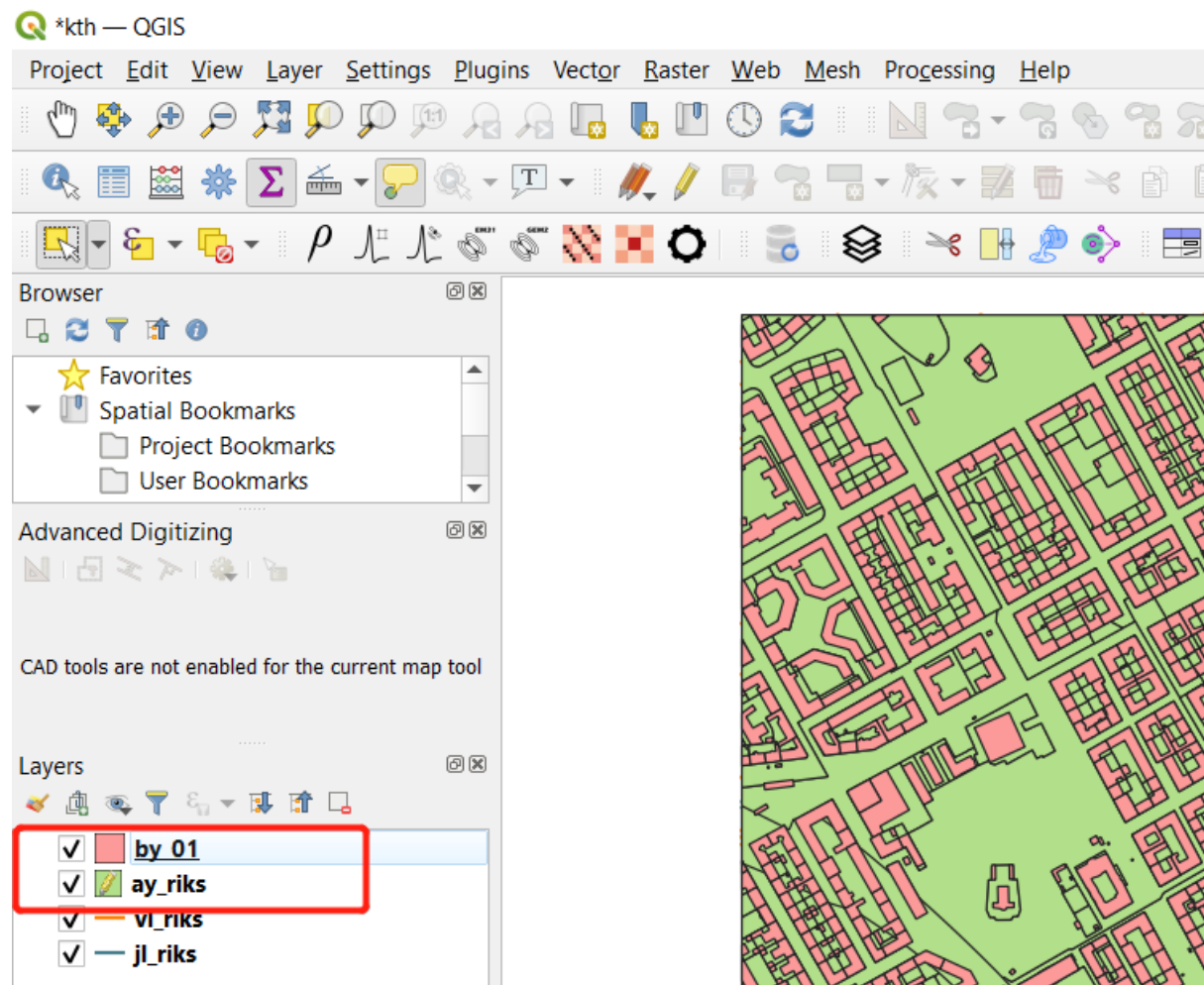
Facade generation steps:

Step 1: load the building and lots shape files in QGIS

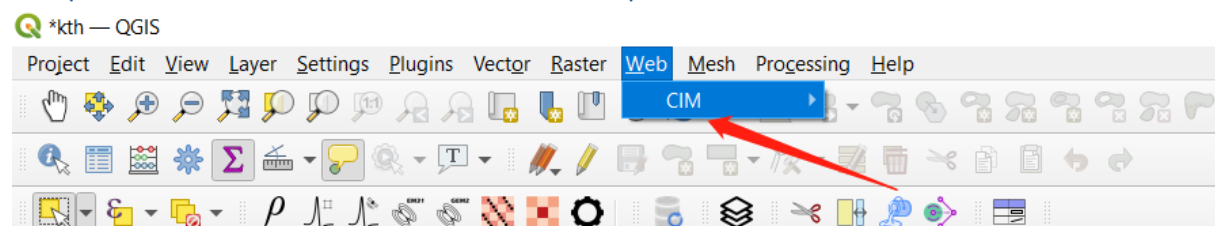


The shape files will be loaded into the main window, which are denoted as by\_01 and ay\_riks below.

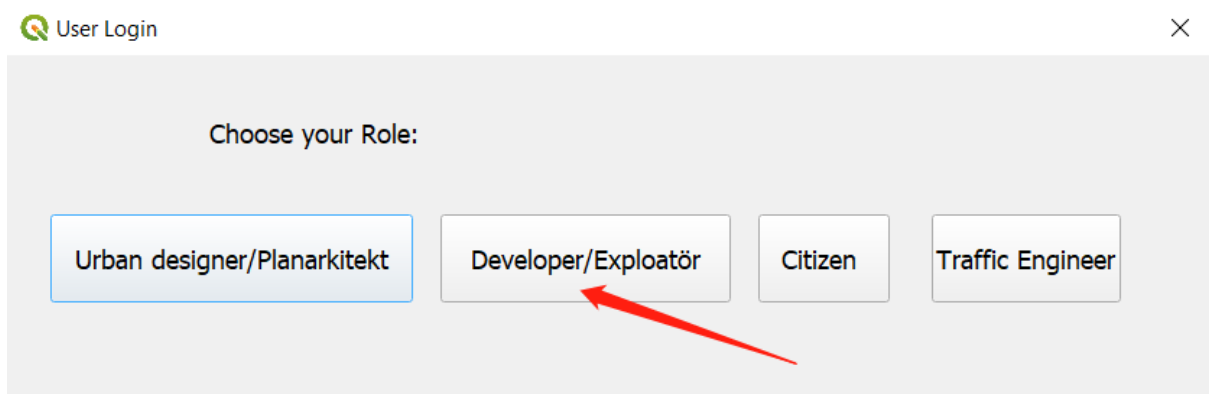
Reminder: You could load any other shape files. Make sure to load both by shapefile and ay shapefile at the same time, in order to run the following features.



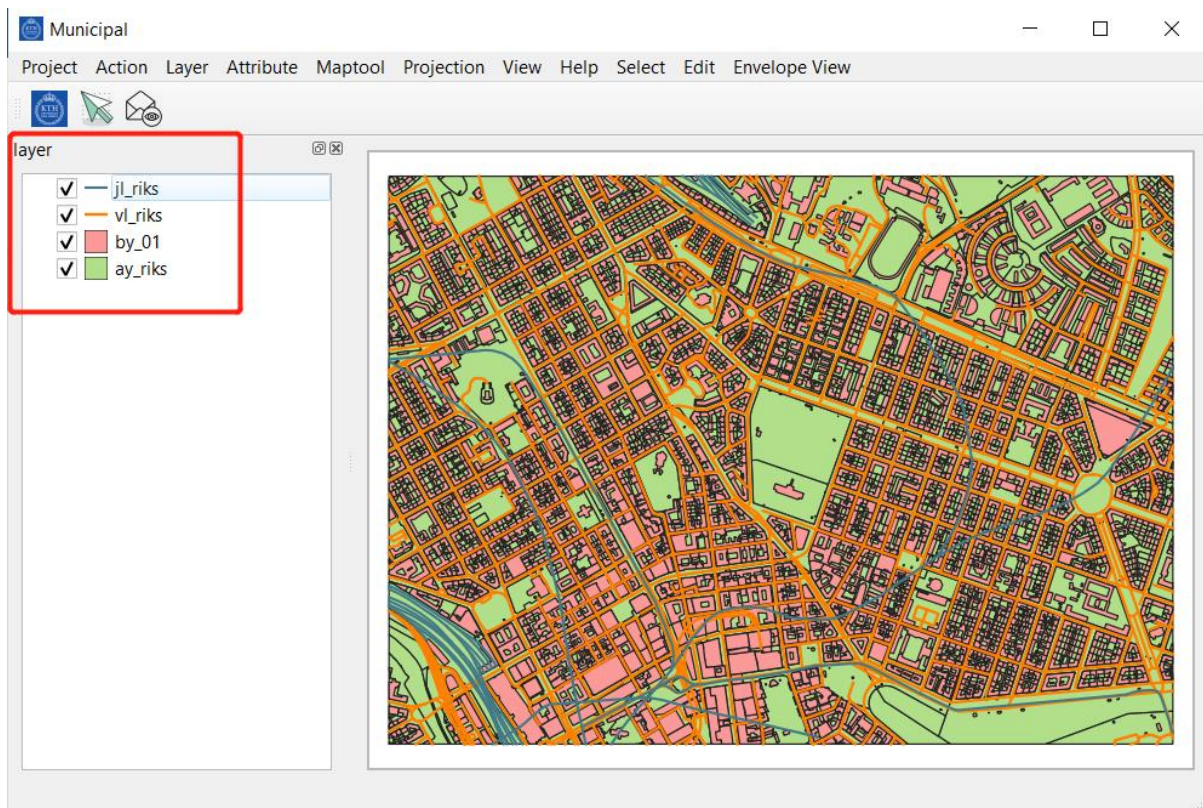
Step 2: select Web -> CIM -> CIM Explore



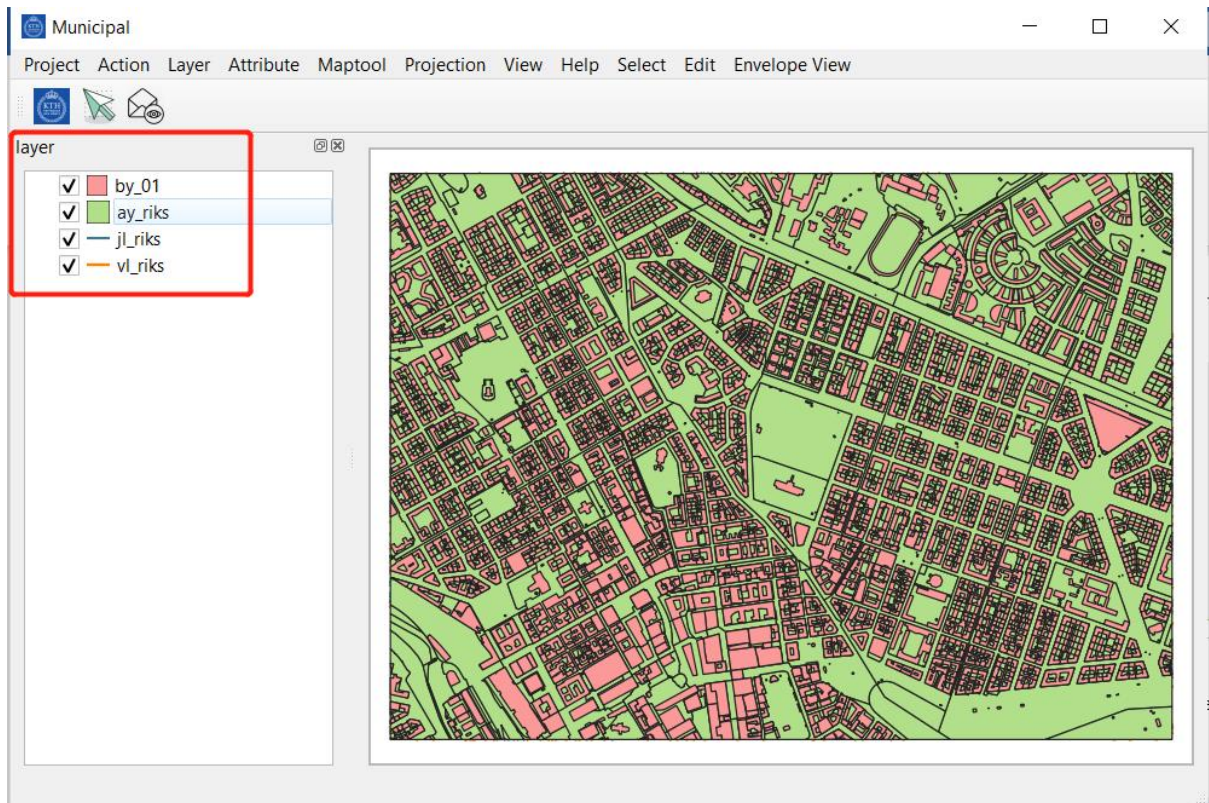
### Step 3: select Developer and enter the Main window



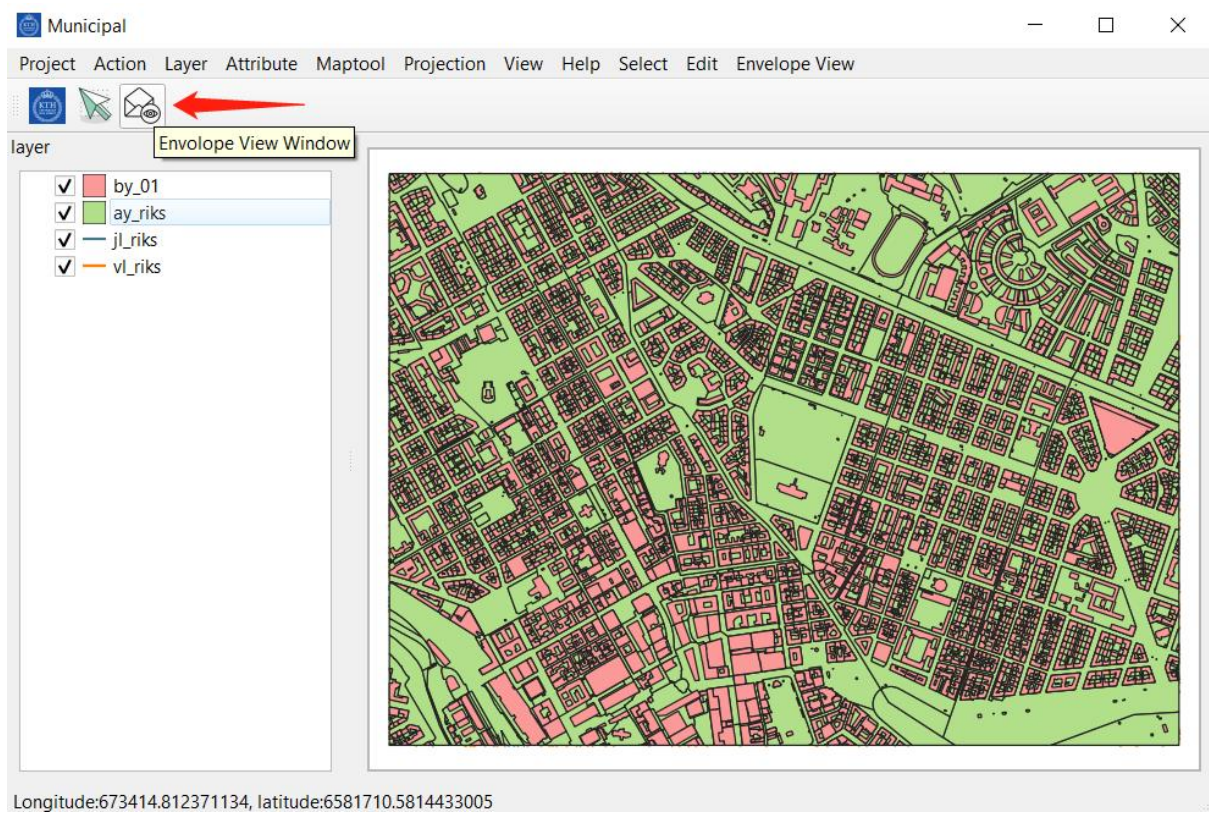
The shapefiles are listed in the layer sub window. You could select the checkbox to show or hide the layer. You could also drag individual shape file to choose which layer is on top.







#### Step 4: Select Envelope view Window

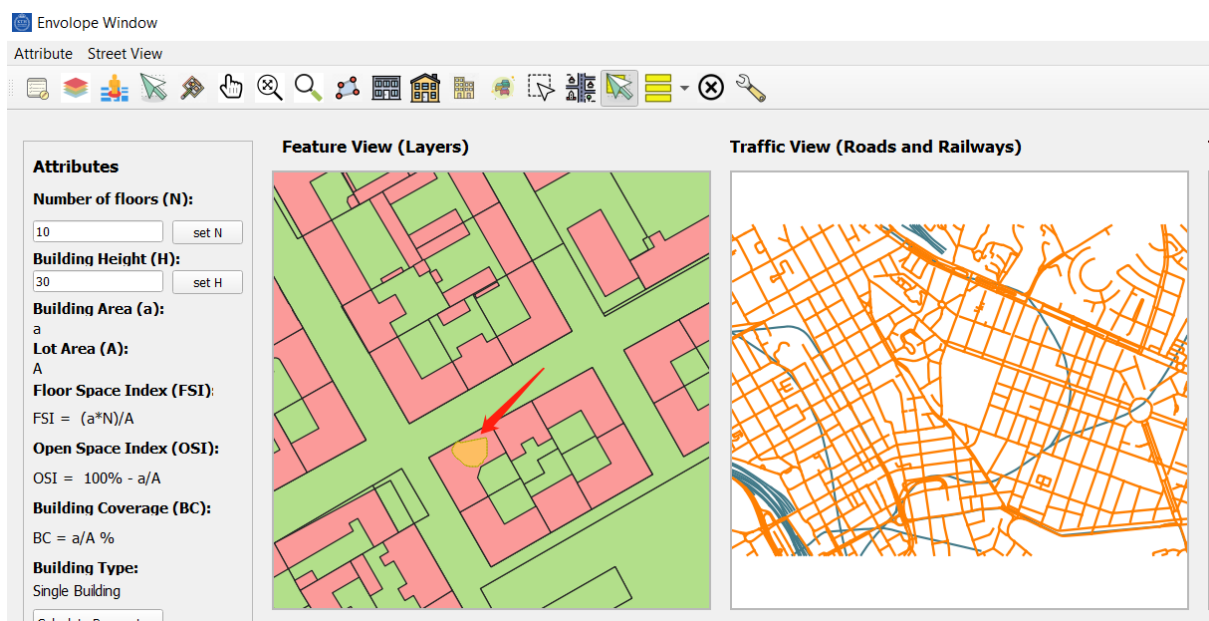
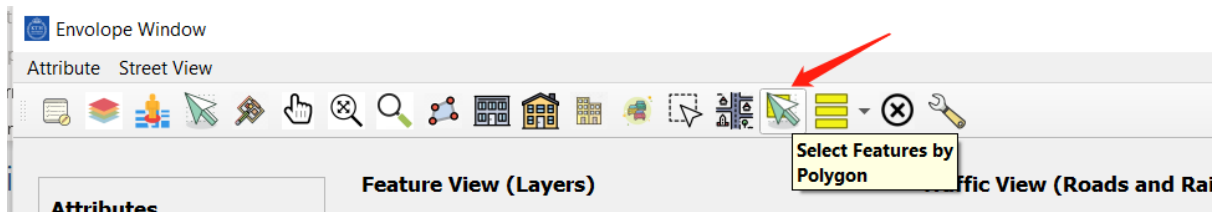
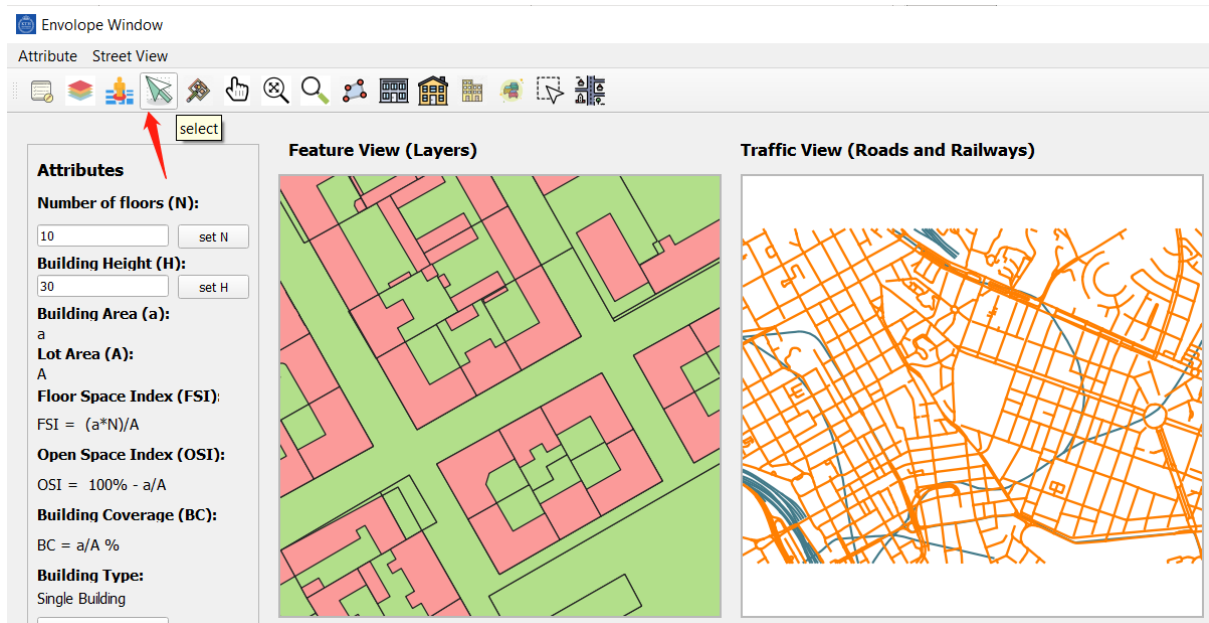


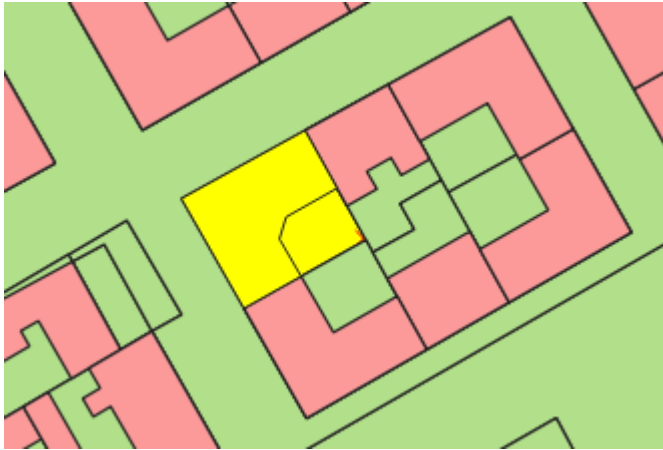
#### Step 5: Select the icon Select Features by Polygon

1. Select -> Select Features by polygon
2. Use mouse to draw a polygon on the building to select it

Reminder: You could use the Scroll on mouse to zoom in the lots and buildings on the Feature View.

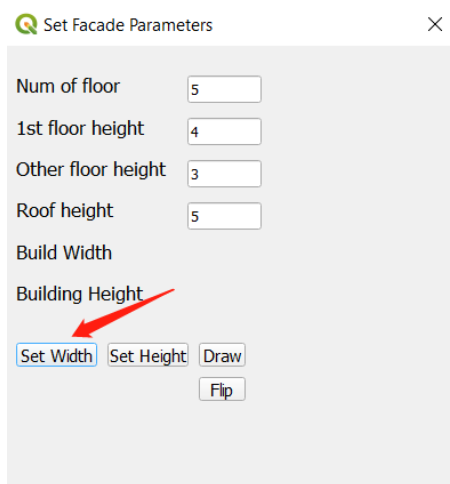
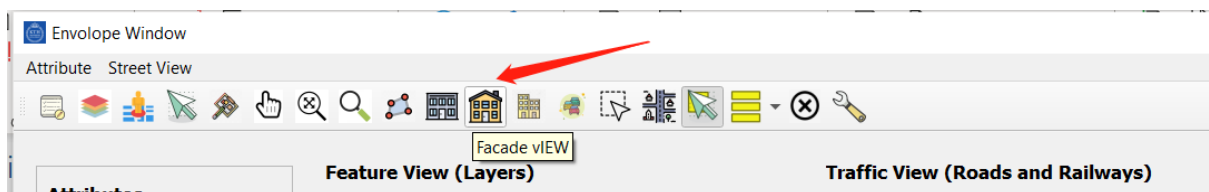
Make sure to draw polygon inside the pink building shown below to select only one building each time. If you draw a large polygon across several buildings, you will select several builds at the same time. This will cause collapse when generating facades later.





## Step 6. Generate Facade

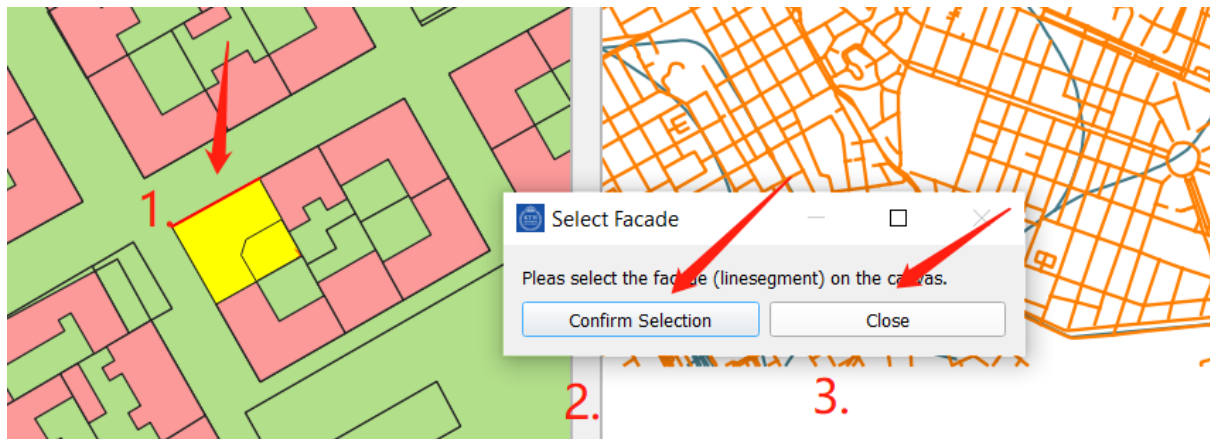
1. Select Facade View icon, it will pop up a Set Facade Parameter window.
2. Select Set Width, it will pop up a Select Facade window



3. Choose the building line you want generate facade, as is shown below the red line near the street on the selected building (colored in yellow).
4. After select the line, press the confirm Selection, and then the close

Reminder: follow the steps in order, otherwise the tool will collapse here.

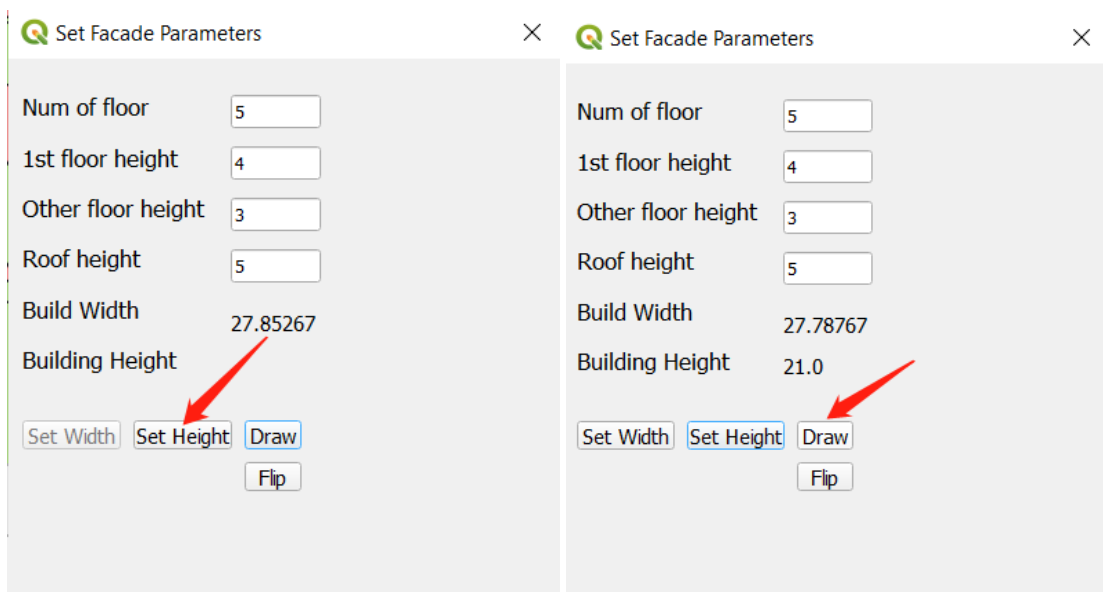




5. Return to the Set Facade Parameters window, change the parameters in the box, and choose Set Height
6. And then press draw, where the facade will be shown in the Envelope View window.

Reminder: if you want to Flip the facade direction, you could use the Flip button. Repeat the above steps to generate more facades along the streets.

This version of CIM tool only enable the screen cut to save the generated facade images currently.







**Envelope View (Facades along Street)**

